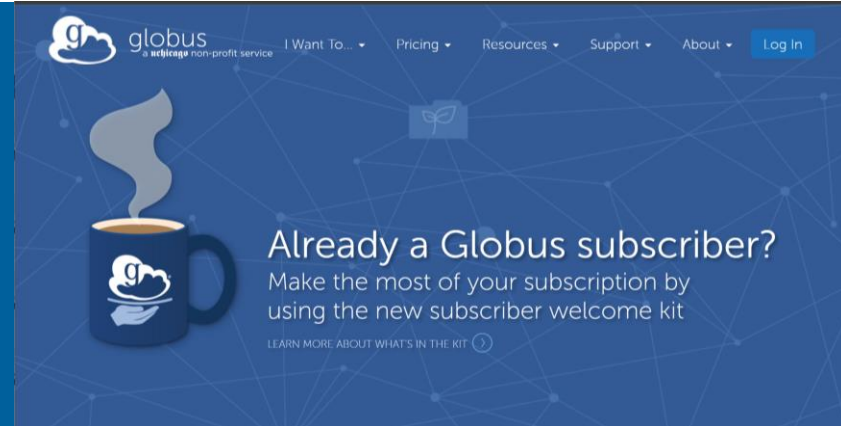


Globus Connect Personal



<https://app.globus.org>

Changyong Park
HPCAT, X-ray Science Division
Argonne National Laboratory

Web service login – https://app.globus.org

Log In using Globus

https://auth.globus.org/p/login?scope=urn%3Aglobus%3Aauth%3Aascope%3Aa...

Log in to use Globus Web App

Use your existing organizational login

e.g., university, national lab, facility, project

Argonne National Laboratory

Didn't find your organization? Then use [Globus ID](#) to sign in. (What's this?)

Continue

Globus uses CILogon to enable you to Log In from this organization. By clicking Continue, you agree to the [CILogon privacy policy](#) and you agree to share your username, email address, and affiliation with CILogon and Globus. You also agree for CILogon to issue a certificate that allows Globus to act on your behalf.

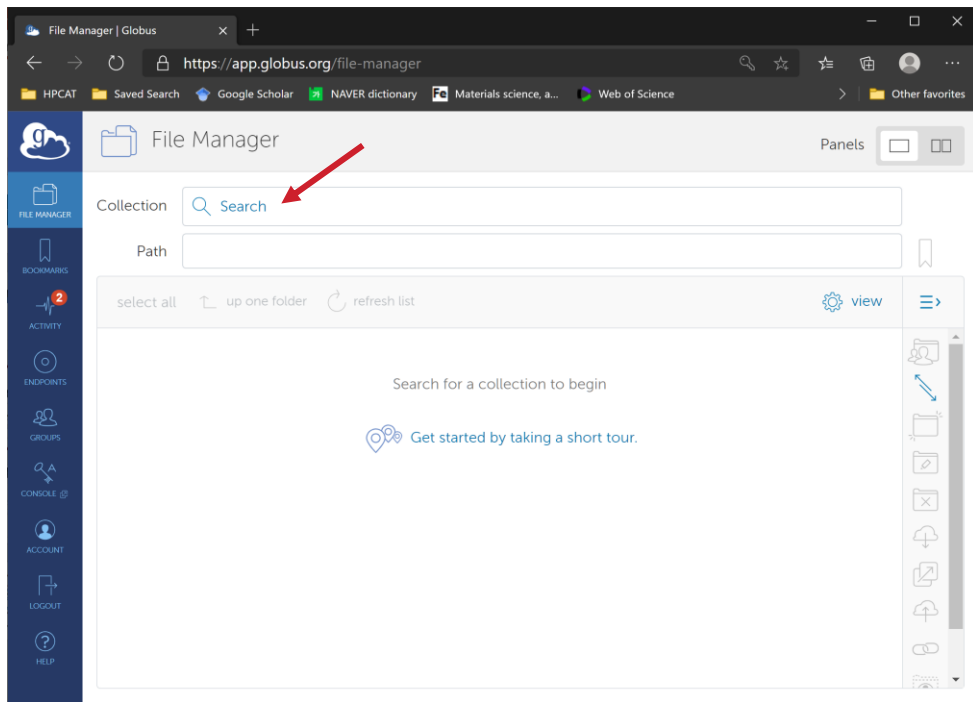
Or

Sign in with Google

Sign in with ORCID ID

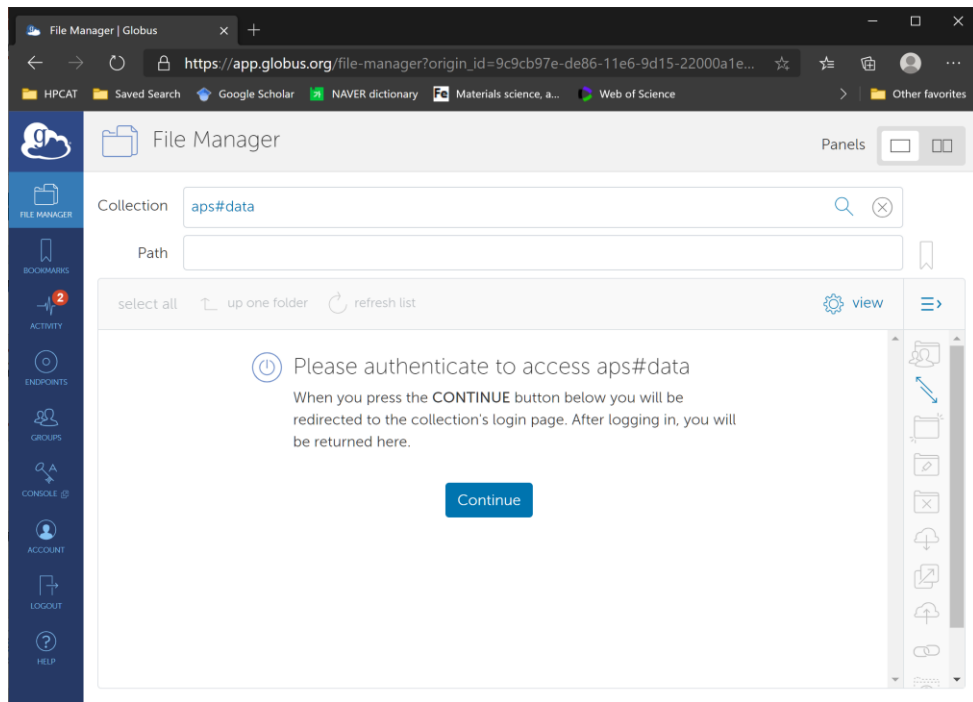
- Organizational login
- Personal login – Gmail, ORCID, or a custom Globus account
- Example is given using a personal login

File Manger – Collection – Search: aps#data



The “aps#data” is an endpoint at Globus site that APS administrates to provide users with data transfer service.

aps#data needs authentication



For the first time connection, the authentication will be requested.

APS Web Portal Authentication with “d” Prefix

MyProxy Client Authorization

Welcome to the OAuth for MyProxy Client Authorization Page. The Client below is requesting access to your account. If you approve, please sign in with your username and password.

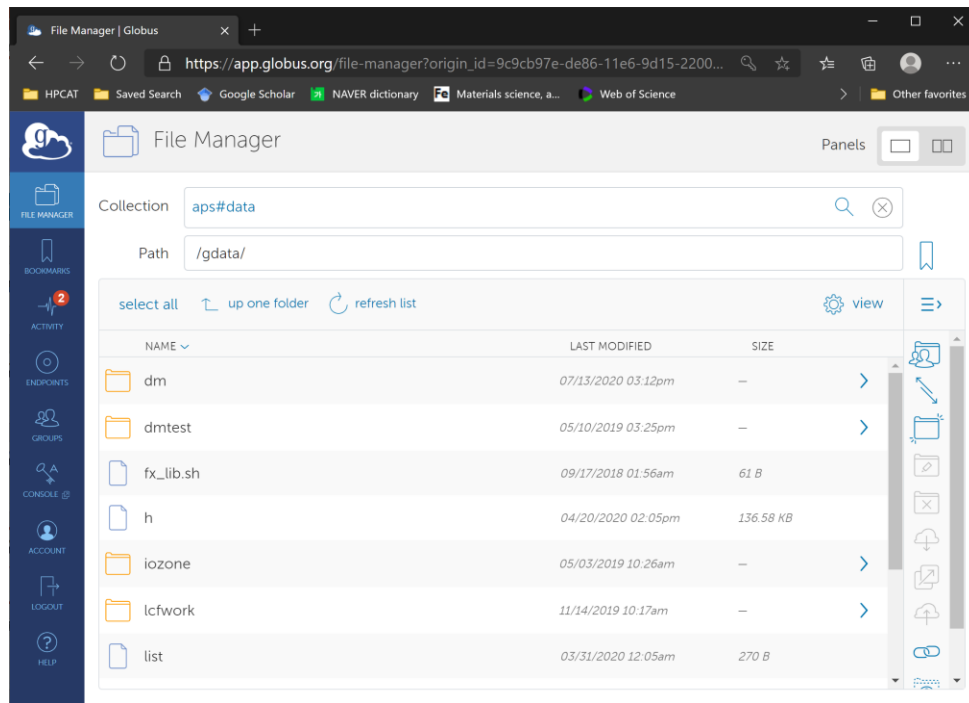
Client Information
Name: Globus
URL: <https://www.globus.org>

Username

Password

- Username: dxxxxxxx
- Password: <APS password>
- If your APS Beamline User Portal access (to login ESAF, GUP, Training, etc.) does not work, reset the APS web password for username "<badge number>" following the link on the portal login page. After reset, it takes up to 15 minutes for changes to propagate to the data management system.

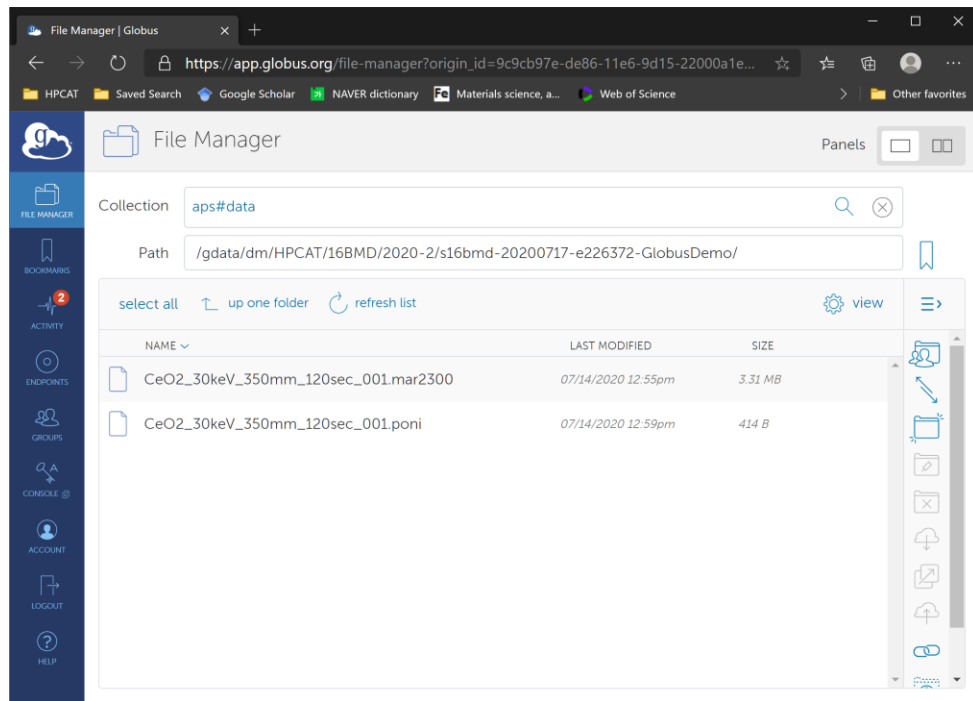
Path to set “/gdata/dm/HPCAT/”



Either navigate the folder trees or directly put in the Path field.

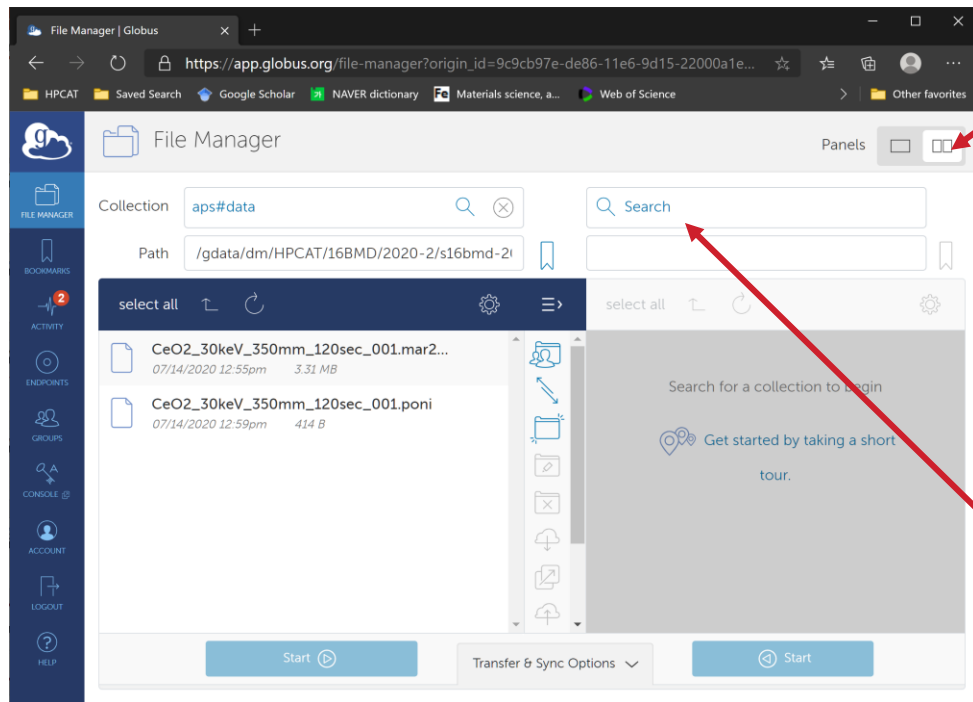
Navigate to your experiment

- <BEAMLINE>/<yyyy-run>/s<beamline>-<yyyymmdd>-e<esaf#>-<description>
- e.g., 16BMD/2020-2/s16bmd-20200717-e226372-GlobusDemo



- Note the sync folder name on Globus would be different from the source folder name on beamline computer.

Prepare to sync the data to a local storage

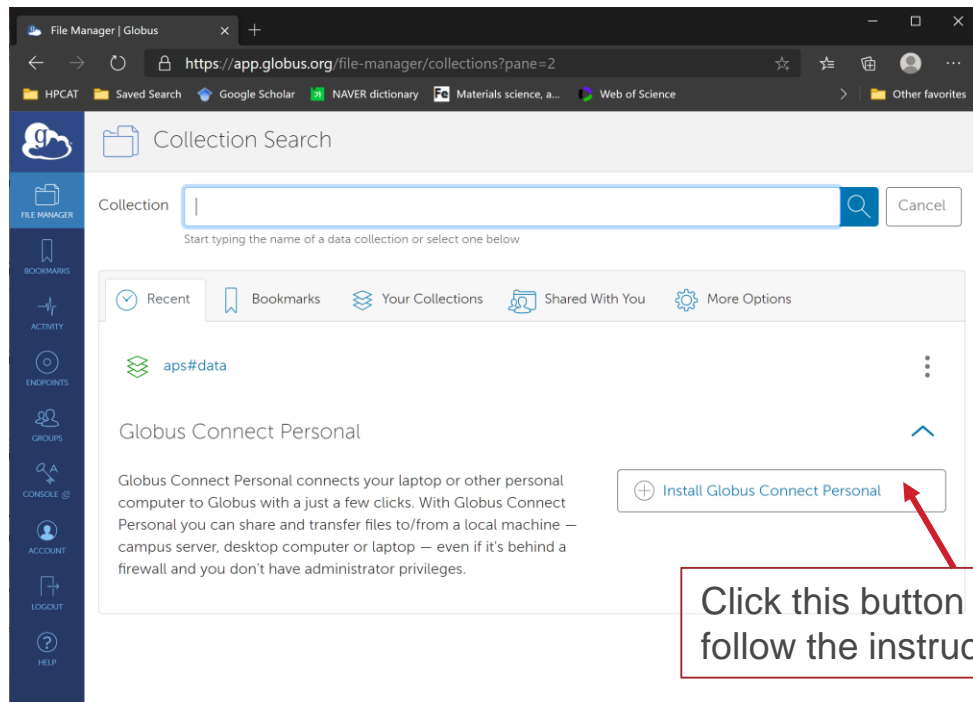


This opens the sync panel.

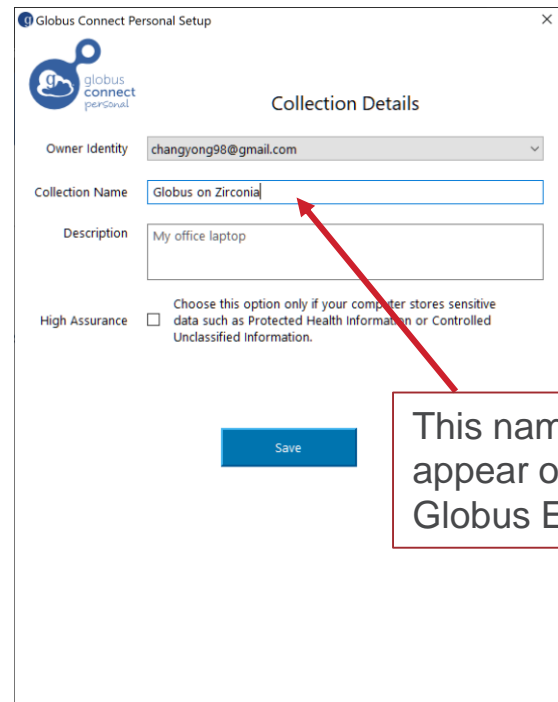
Here, you will need to install “Globus Connect Personal” on your local machine (pc or laptop), if this is the first-time connection.

Click “Search”

Install Globus Connect Personal



Click this button and follow the instruction.



This name will appear on your Globus Endpoint.

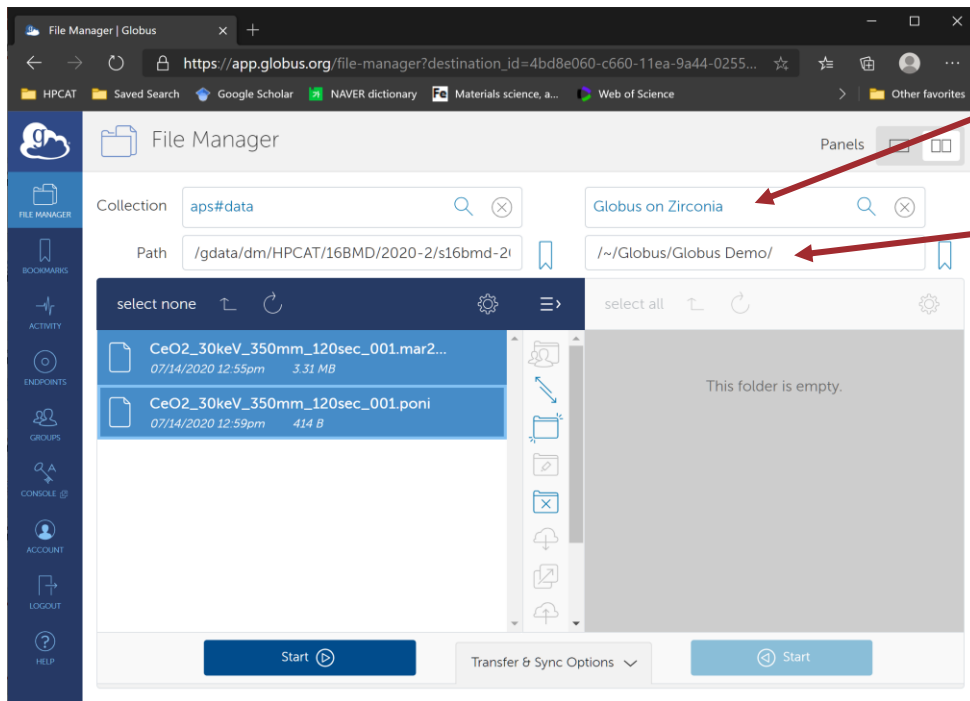
Endpoint Administrated by You

The screenshot shows the Globus Endpoints web application interface. The browser address bar displays the URL `https://app.globus.org/endpoints?scope=administered-by-me`. The left sidebar contains navigation links: FILE MANAGER, BOOKMARKS, ACTIVITY, ENDPOINTS (highlighted with a red arrow), GROUPS, CONSOLE, ACCOUNT, LOGOUT, and HELP. The main content area has a search bar and a filter dropdown menu. The filter dropdown is open, showing options: Recently Used, In Use, Shareable by You, Shared with You, and **Administered by You** (highlighted with a blue box and a red arrow). Below the filter, a table lists endpoints. The table has columns: ENDPOINT, STRICT, STATUS, ROLE, and SHARED. One endpoint is listed: **Globus on Zircania** (with a red arrow pointing to the endpoint name), with the subtext **Globus Connect Personal**, status **ready**, and role **QA**.

ENDPOINT	STRICT	STATUS	ROLE	SHARED
Globus on Zircania Globus Connect Personal		ready	QA	

Your endpoint is administrated by you.

Start to sync to local folder



Find this from File Manger - Collection

Navigate on your local machine

- The transfer and sync is one-way.
- You do not have a “write” permission in aps#data endpoint.
- You can only transfer and sync the data from aps#data to your local storage.

Tips at the beamline

- Understand the data transfer and sync is one-way (source to target).
- Two options (ask your local contact to setup):
 - Upload the data all at once after completing the experiment
 - Real time data upload and sync
- During the real time upload and sync, creation of new folders and files, and modification of the existing ones at source will be synced real-time (with some latency depending on internet traffic).
- Deletion of exiting ones, however, cannot be synced and may mess up the folder trees at Globus endpoint. Use real-time sync with a caution.

Useful Links

- Globus online general description (<https://app.globus.org/>)
- A step-by-step instruction on data transfer (<https://www.aps.anl.gov/Imaging/Data-Transfer>)
- A user guide on DCS site (<https://dcs-aps.wsu.edu/planning-for-experiments/globus-data-managment/>)