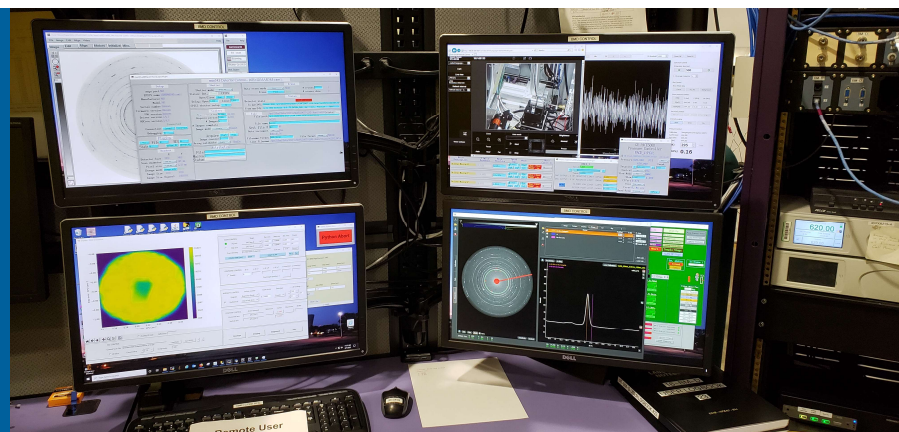


HPCAT REMOTE USER EXPERIMENT SINCE 2020-2



16-BM-D REMOTE USER OPERATION GUIDE



CHANGYONG PARK
HPCAT, X-ray Science Division
Argonne National Laboratory

DMITRY POPOV

GUOYIN SHEN

NOMACHINE DISPLAY SETTING



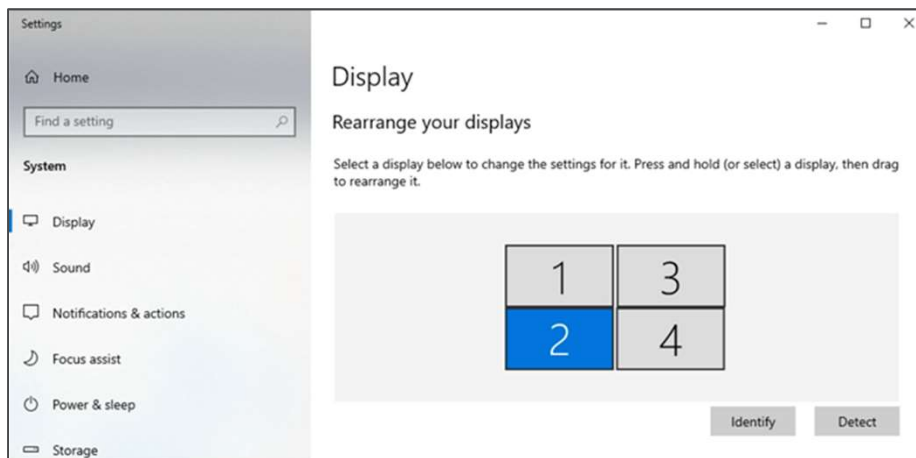
**U.S. DEPARTMENT OF
ENERGY**

Argonne National Laboratory is a
U.S. Department of Energy laboratory
managed by UChicago Argonne, LLC.



Beamline's Display:

The Main Beamline Control Computer's Physical Display Setting



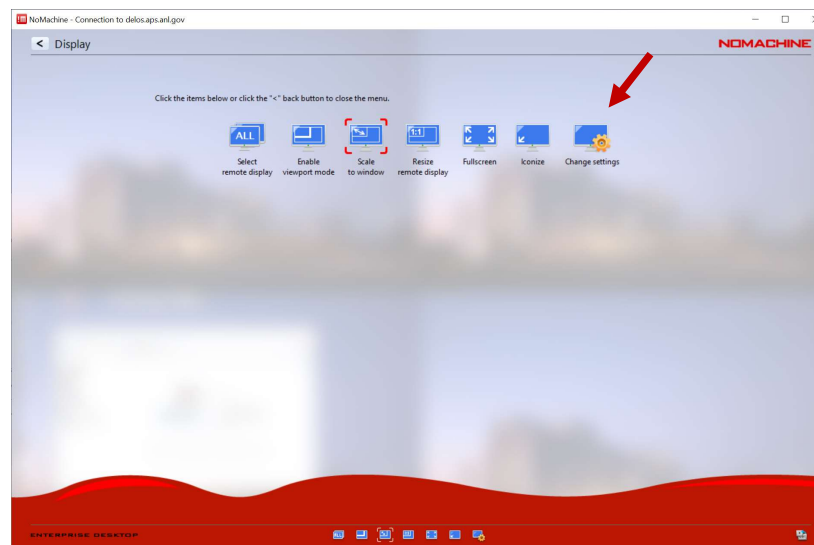
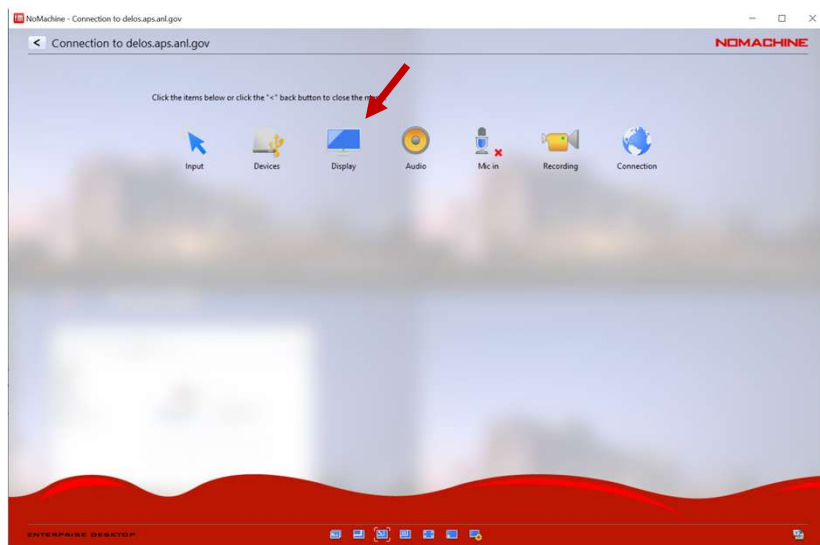
- Four physical screens with IDs
- 1920 x 1080 resolution for each screen
- Client NoMachine session best works when its screen resolution matches with the beamline's.

Note that beamline's EPICS GUI is based on a merged 4-screen coordination (3840x2160 pixel coordinates). Changing the resolution of any one of these 4 screens results in a modification of the screen coordinates and cause unexpected behaviors of the EPICS displays (e.g., disappearing from the screen).

NoMachine Display Setting:

“Ctrl + Alt + 0” shortcut

Ctrl+Alt+0 → Display → Change settings

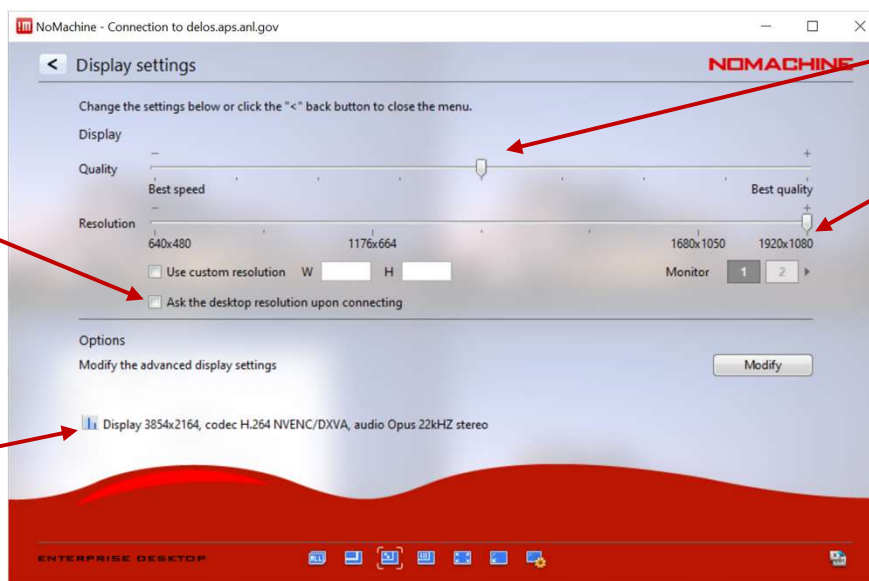


NoMachine Display Setting:

Balance between speed and quality, and be aware of a possible adverse effect on EPICS display by changing the resolution

Uncheck this box

This is client's screen resolution (i.e., your computer screen)



The lower the quality, the faster the display update.

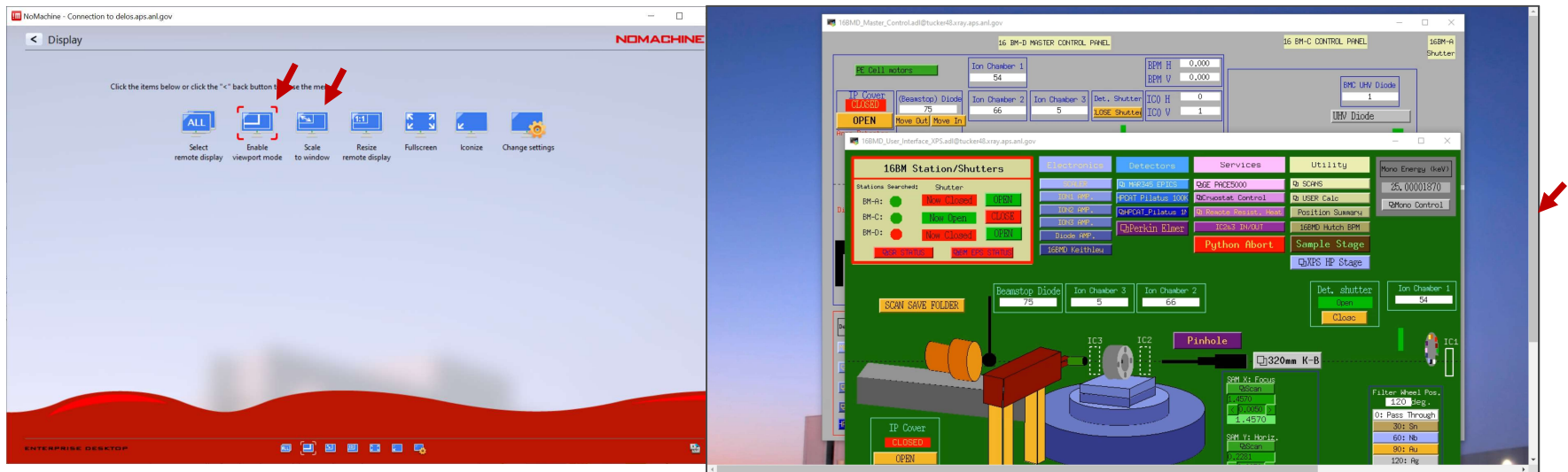
Match the resolution to the beamline's display resolution for all 4 monitors.

This can be (or has to be) customized to match client's best resolution (esp. for lower resolution monitors), but it will globally affect beamline's screen coordinates and may result in an adverse effect on the EPICS GUI. Inform other co-users if this setting is to be changed.

NoMachine Display Setting:

For monitors with poor resolution

“Enable viewport mode” will allow to scroll the screen. This function will help to get better screen image on the client screen if the client resolution is poorer than the remote display.



NoMachine Screen Navigation:

Shortcut keys (Windows and Linux):

- Ctrl + Alt + 0: for settings, quick screen actions, and disconnection*
 - Ctrl + Alt + 1,2,3, or 4: for navigating the screens
 - Ctrl + Alt + a: for showing all screens (useful to move windows across screens)
 - Ctrl + Alt + f: for toggling to a full screen mode
 - Esc: for escaping from the full screen mode
 - Ctrl + Alt + i: for identifying the screens
 - Ctrl + Alt + t: for disconnecting*
 - Ctrl + Alt + End: “Ctrl + Alt + Del” for lock screen
- “Ctrl + Alt + 0” and “Connection” icon will bring a new screen showing the “Disconnect” button.

Tips for connection issues:

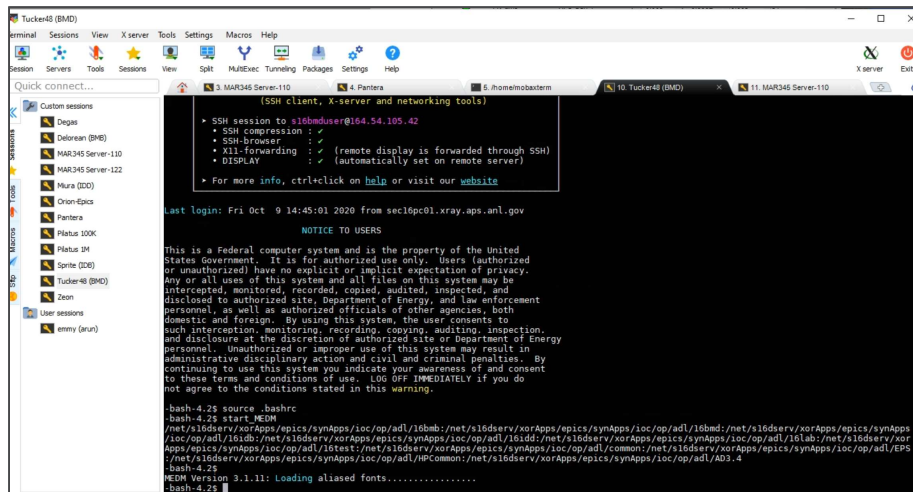
Commonly experienced

- Check the internet **bandwidth** - APS-IT recommends faster than **25 Mbps**.
- Internet speed may depend on your **device** too (pc, laptop, tablet, etc.) – check your device's speed.
- Avoid custom **proxy** setting on computer or browser. It may interfere the connection.
- Your organizational **firewall** may block the APS ip addresses.
- NoMachine **client software** is free. Give it a try, if browser-based connection has an issue.
- It shares the **resources**; therefore, multiple simultaneous connections are not always the best.
- For a blur screen, **hover the mouse** and click
- For screen scroll, use “**Enable viewport mode**” option.
- For a locked screen, **disconnect and wait 5-10 minutes** and try to reconnect again.

BEAMLINE EPICS MEDM WINDOWS

MobaXterm:

SSH terminal and X11 tunneling for EPICS applications



From the Use session tab

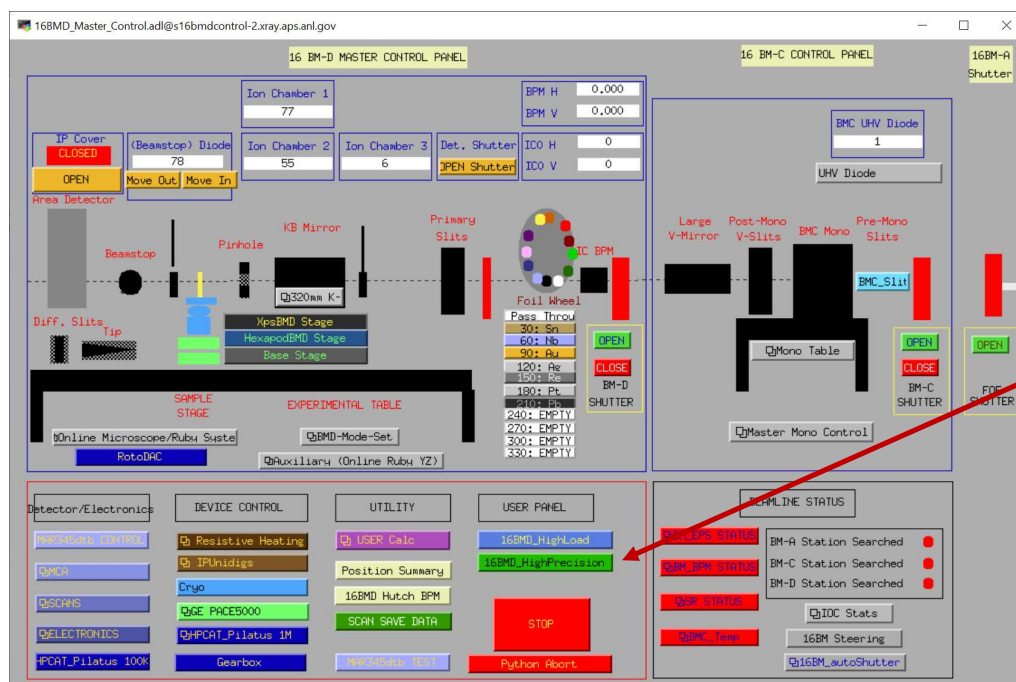
- s16bmdcontrol-2 (s16bmduser):
 - login: s16bmduser (password saved)
 - > start_MEDM_16bmd
- Mar345 Server (mar345):
 - login: mar345
 - > mar345dtb (start detector server)
 - duplicate the tab or open a new session
 - > start_epics (EPICS area detector controller)
 - Make sure the image mode is mar2300 (i.e., 150 μ m pixel). If necessary, change the mode.



Keep this program running and never close.

16-BM-D Master Control

16BMD_Master_Control to open 16BMD_HighPrecision interface

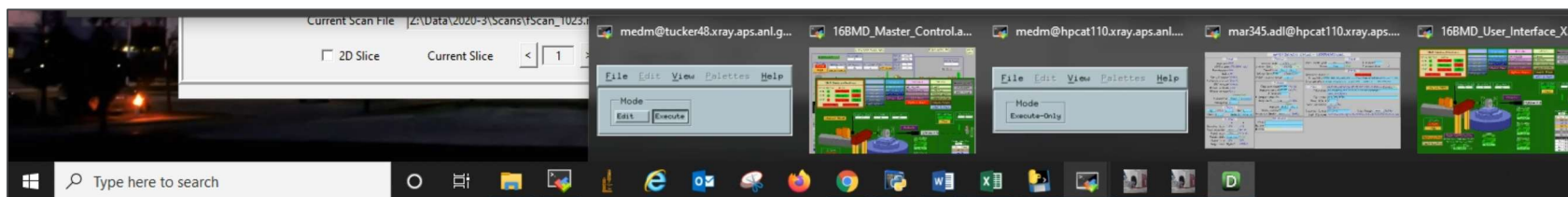


Open 16BMD user interface

- 16BMD_HighPrecision
- For high-precision XPS sample stage (default)
- 16BMD_HighLoad
- For high-load sample stage (for cryostat experiments)

EPICS Windows on Desktop

Taskbar icon collections for the EPICS windows



MobaXterm XServer
(let the program keep
running undisturbed)

Collections of the EPICS windows
(Note the icons are identical to MobaXterm as they
are all tunneled through the MobaXterm XServer.)

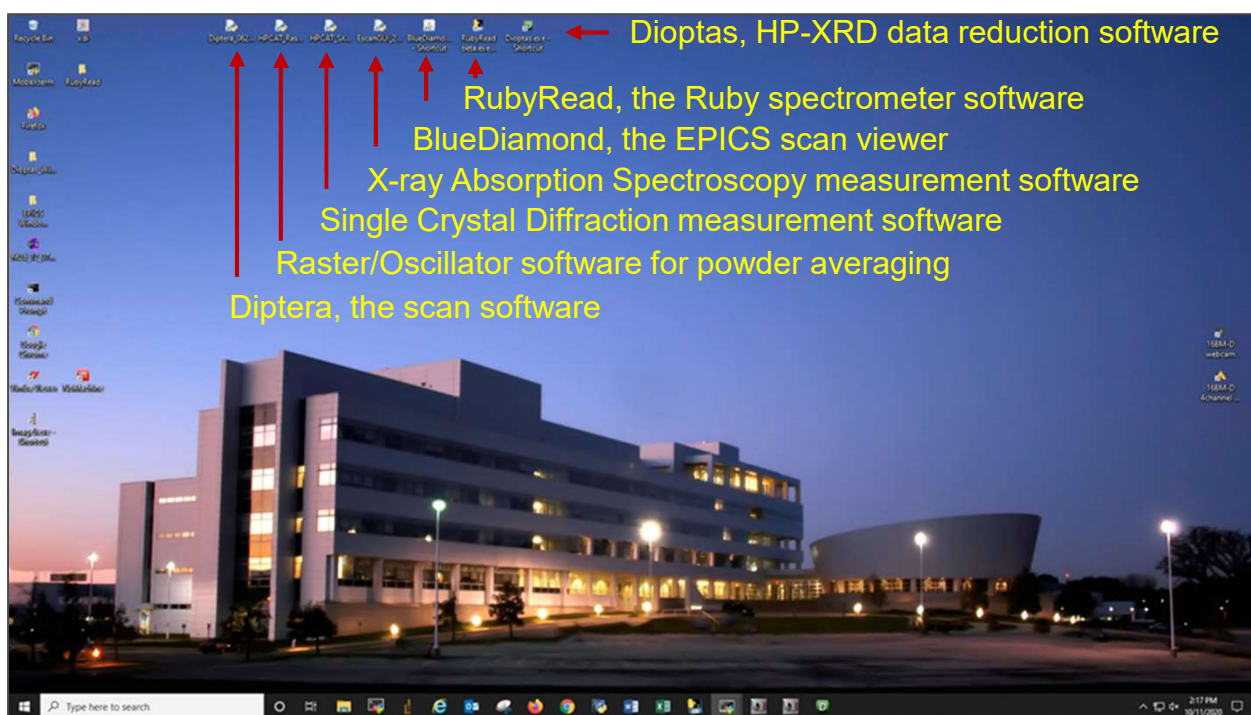
BEAMLINE SOFTWARE DESKTOP SHORTCUTS



U.S. DEPARTMENT OF
ENERGY

Argonne National Laboratory is a
U.S. Department of Energy laboratory
managed by UChicago Argonne, LLC.





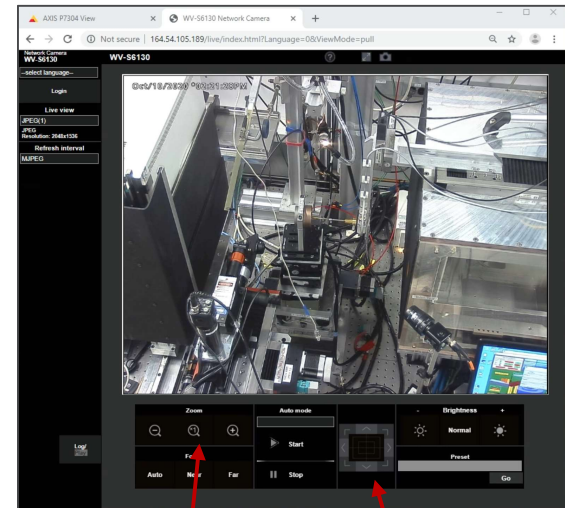
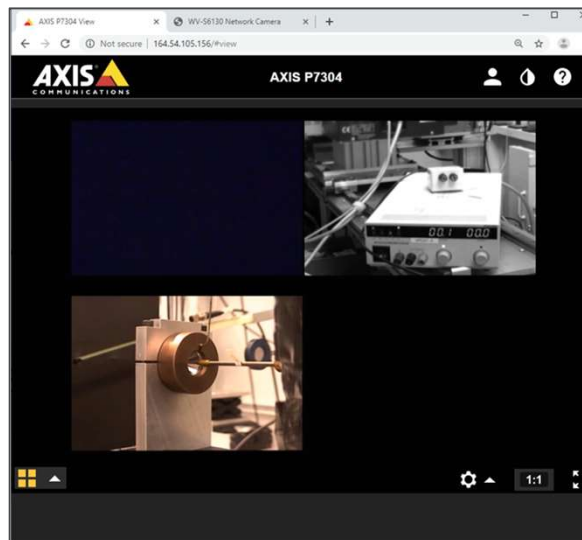
Web Camera and Quad-Channel Video

Visuals for inside of hutch and cameras



Web browser shortcuts for web camera and quad-channel videos

Channel selection



Zoom control

Camera pane angle

DIRECTORY AND FOLDER NAME CONVENTION

Directory and Folder Name Convention:

Beamline computer

- Mapped network drive: CurrentUser (\\s16data\16BMD) (Z:)
- User data folder: Z:\ESAFxxxxxx-<PI last name>
- Diptera scan save directory: Z:\scanDump or C:\HPCATSoftware\Diptera\ScanData\yyyy-n
- User support folder: Z:\support (e.g., user manual)

Globus online

- Endpoint: aps#data (needs APS User Authentication – d<badge> and password)
- Root path: /gdata/
- User data folder: /gdata/dm/HPCAT/16BMD/yyyy-n/s16bmd-<yyyymmdd>-e<xxxxxx>-<description>
- <https://hpcat.aps.anl.gov/sites/hpc-aps-d8.aps.anl.gov/files/HPC/GlobusPersonalConnect%20for%20Users.pdf>